

# 'As Builts' Checklist

For your development to be signed off by Chorus, we require your 'As Builts' which is the design showing the materials you've installed on site. These provide the dimension information for planning purposes and assist in the GIS recording of underground assets. This helps reduce damage to network in the field.

Please ensure dimensions are shown on drawing files.

Please supply your 'As Builts' in DWG, PDF or CAD format (preferably DWG).

**Below is the list of the MINIMUM information required:**

## Checklist items

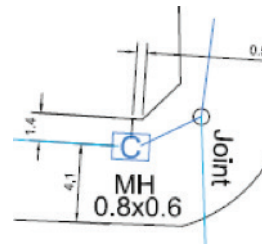
Date			
Provider name of the 'as builts'			
Phone number			
Chorus job no. + descriptions			
Address information of development			
<b>Dimensions</b>	<b>Pass</b>	<b>Fail</b>	<b>Notes</b>
New/existing manhole/pits: 2 dimensional to CL			
Joints/lateral joints: 2 dimensional			
Duct ends + road crossings: 2 dimensional			
Greater than 0.3 duct to lay line boundary change			
Dimensions to nearest side of boundary line			

**Other information**

Trench/duct contents i.e. ducts, fibre			
Manhole/pit number, size, type			
Transitions duct changes i.e. 1/100 to 2/50			
Installation method i.e. drilled, trenched, hauled			
Installation depths (cover)			



Example of duct dimensions every second boundary line dimensional.



Example of manhole dimensions - two dimensional from boundary line to cover lid of manhole.